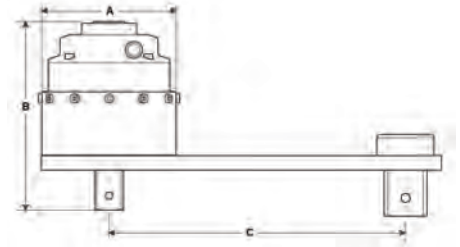




Handtorque™ Standard Series Models to 3400 N.m

- True torque multiplication guaranteed better than $\pm 4\%$.
- High ratios allow the use of a small torque wrench, multipliers can be used where access is limited.
- Anti Wind-Up Ratchet available on models of 25:1 ratio.
- Other reaction styles can be designed to suit specific applications.
- Electronic torque transducers can be fitted for precise torque monitoring. See page 83.



HT5/25



HT2/5

Standard Series to 3400 N.m

Model	Part No.	Range		Ratio	Input Square	Output Square	A	B	C min	C max	Tool Weight	Reaction Weight
		N.m	lbf.ft									
1	16010	1700	1250	5:1	½	¾	108	106	83	217	3	2.2
2/5	16012	1700	1250	5:1	¾	1	108	126	83	217	3	2.2
2/25 Fitted with AWUR	16089	1700	1250	25:1	½	1	108	141.5	83	217	5.6	2.2
5/5	16014	3400	2500	5:1	¾	1	119	142.1	86	264	4.7	2.5
5/25 Fitted with AWUR	16090	3400	2500	25:1	½	1	119	167.6	86	264	7.5	2.5
6/5	16016	3400	2500	5:1	¾	1½	119	144.7	86	264	4.7	2.5
6/25 Fitted with AWUR	16092	3400	2500	25:1	½	1½	119	172	86	264	7.5	2.5

Handtorque™ Standard Series Models to 47500 N.m

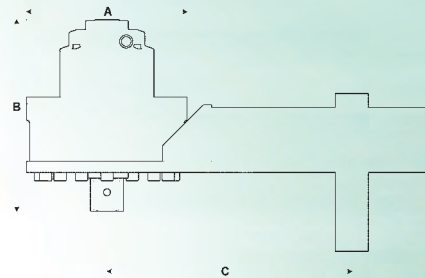
- True torque multiplication guaranteed better than $\pm 4\%$.
- High ratios allow the use of a small torque wrench, multipliers can be used where access is limited.
- Anti Wind-Up Ratchet available on models of 25:1 ratio and above.
- Electronic torque transducers can be fitted for precise torque monitoring. See page 83.
- Other models available up to 300,000 N.m.



HT13/125



HT9/125



Standard Series to 47500 N.m

Model	Part No.	Range		Ratio	Input Square		A	B	C		Tool Weight	Reaction Weight
		N.m	lbf.ft		in	in			min	max		
7/5	16067	6000	4500	5:1	$\frac{3}{4}$	1 $\frac{1}{2}$	144	174.8	146	333	8.1	6.3
7/25 Fitted with AWUR	16065	6000	4500	25:1	$\frac{1}{2}$	1 $\frac{1}{2}$	144	201.1	146	333	10.7	6.3
7/25 Sm. Dia Fitted with AWUR	16095	6000	4500	25:1	$\frac{1}{2}$	1 $\frac{1}{2}$	130	201.1	163.4	337	10.6	4.9
7/125 Fitted with AWUR	16068	6000	4500	125:1	$\frac{1}{2}$	1 $\frac{1}{2}$	144	226	146	333	12.2	6.3
7/125 Sm. Dia Fitted with AWUR	16096	6000	4500	125:1	$\frac{1}{2}$	1 $\frac{1}{2}$	130	226	163.4	337	12.1	4.9
9/25 Fitted with AWUR	16070	9500	7000	25:1	$\frac{3}{4}$	1 $\frac{1}{2}$	184	200.1	171	351	17.4	8.3
9/125 Fitted with AWUR	16071	9500	7000	125:1	$\frac{1}{2}$	1 $\frac{1}{2}$	184	220.1	171	351	18.9	8.3
11/25	16082	20000	14700	25:1	$\frac{3}{4}$	2 $\frac{1}{2}$	212	265.6	-	500	30.1	13.3
11/125 Fitted with AWUR	16049	20000	14700	125:1	$\frac{1}{2}$	2 $\frac{1}{2}$	212	293.4	-	500	32.1	13.3
12/87.5 Fitted with AWUR	18085	34,000	25000	87.5:1	$\frac{3}{4}$	2 $\frac{1}{2}$	240	337	-	-	41.5	6.5
13/125 Fitted with AWUR	16053	47500	35000	125:1	$\frac{3}{4}$	2 $\frac{1}{2}$	315	379	-	-	95.2	6.9